



# RICHBERRY HOUSE, SIXTH AVENUE BLACKPOOL FY4

**OFFERS IN THE REGION OF £650,000**

Situated in a first class residential location set back from the avenue in a very private setting behind electric gates, this outstanding large detached residence is very well presented throughout and offers accommodation of approximately 3300 square feet which briefly comprises, hallway, cloaks WC, lounge, open plan living kitchen diner, gymnasium/dining room, Office and Study, cinema room, superb swimming pool complex with sauna and shower, five first floor bedrooms, two with en suites, family shower room, roof garden, set in large landscaped grounds with a detached annexe in the grounds comprising a spacious lounge bedroom and shower room. upvc double glazed, gas central heating, off street parking for several cars.





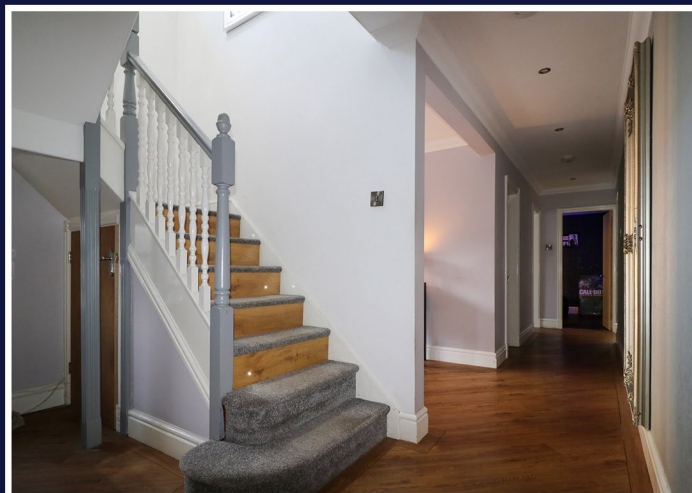
## GROUND FLOOR

### Hallway:

**Lounge:** 15' 6" x 14' 10" (4.73m x 4.53m)

Parquet flooring, fireplace with log burning stove, two radiators, upvc double glazed windows and doors through to the gymnasium.

**Living/Kitchen/Diner:** 30' 2" x 22' 4" (9.19m x 6.80m) Measured to maximum points. A superb large open plan living/kitchen/diner with a range of fitted wall and base units and complementary work surfaces, break fast bar, sink unit, built in electric double oven with a 5 ring hob and extractor hood, integrated fridge, freezer and fridge freezer, part tiled walls, upvc double glazed windows and door to side elevation, Karndean flooring, radiators.











## GROUND FLOOR (CONTINUED)

**Utility Room/WC:** 7' 4" x 6' 5" (2.24m x 1.96m)

Work surface, plumbed for auto washer, low flush WC and wash hand basin, half tiled walls, tiled floor, vertical radiator.

**Study/Dining Room:** 12' 7" x 8' 10" (3.84m x 2.7m)

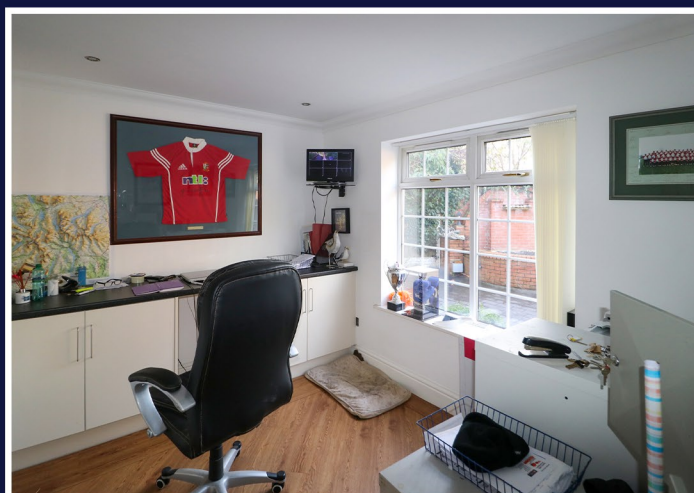
Karndean flooring, radiator, two upvc double glazed windows & upvc double glazed doors to rear garden.

**Cinema Room:** 11' 8" x 9' 6" (3.55m x 2.89m)

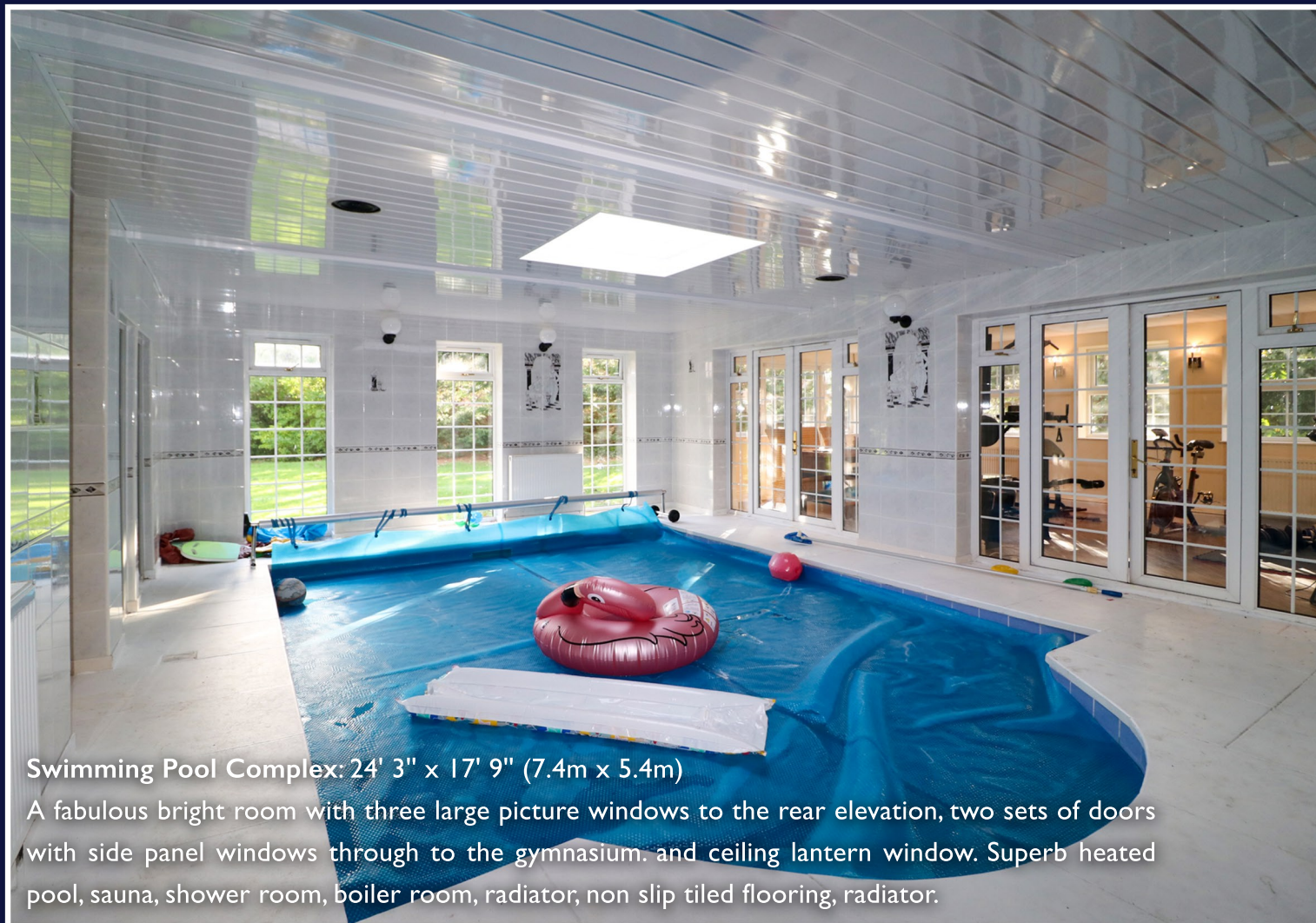
Electric blackout blind to upvc double glazed window, radiator.

**Office:** 10' 2" x 8' 6" (3.10m x 2.59m)

Karndean flooring, radiator, upvc double glazed window.











## FIRST FLOOR

**Landing:** 15' 6" x 14' 3" (4.72m x 4.34m)

A large landing with parquet flooring and radiator.

**Bedroom:** 22' 5" x 13' 7" (6.82m x 4.15m)

A grandiose master bedroom, four upvc double glazed windows, radiator, large walk in wardrobe to the full width of the room.

**En-suite:** 10' 10" x 8' 11" (3.3m x 2.72m)

A beautiful fully tiled En-suite with a free standing bath, twin sinks set in a modern unit, low flush WC, contrasting tiled walk in shower with glass screen. Heated towel rail, upvc double glazed window.

**Bedroom:** 15' 10" x 11' 6" (4.83m x 3.50m)

Built in wardrobe, radiator, parquet flooring, upvc double glazed with large opening window through to the roof garden.





## FIRST FLOOR (CONTINUED)

**En-suite:** 8' 2" x 4' 9" (2.48m x 1.45m)

Stylish tiling, walk in shower, wash hand basin set in a modern unit, low flush WC, heated towel rail, upvc double glazed window.

**Bedroom:** 11' 7" x 10' 2" (3.52m x 3.1m)

Parquet flooring, radiator, upvc double glazed window, built in wardrobe.

**Bedroom:** 10' 2" x 9' 10" (3.1m x 3m)

Built in wardrobe, radiator, parquet flooring, upvc double glazed window.

**Bedroom:** 8' 8" x 7' 7" (2.64m x 2.31m)

Upvc double glazed window, radiator, parquet flooring.

**Shower Room:** 7' 7" x 7' 7" (2.31m x 2.31m)

Fully tiled walls and floor, walk in shower, vanity wash hand basin and a low flush WC. Heated towel rail, upvc double glazed window.

**Roof Garden:** Laid with synthetic turf, wrought iron railings.







## ANNEXE

**Lounge:** 19' 2" x 16' 11" (5.85m x 5.15m)

Four radiators, upvc double glazed patio door and windows.

**Bedroom:** 16' 11" x 13' 0" (5.15m x 3.96m)

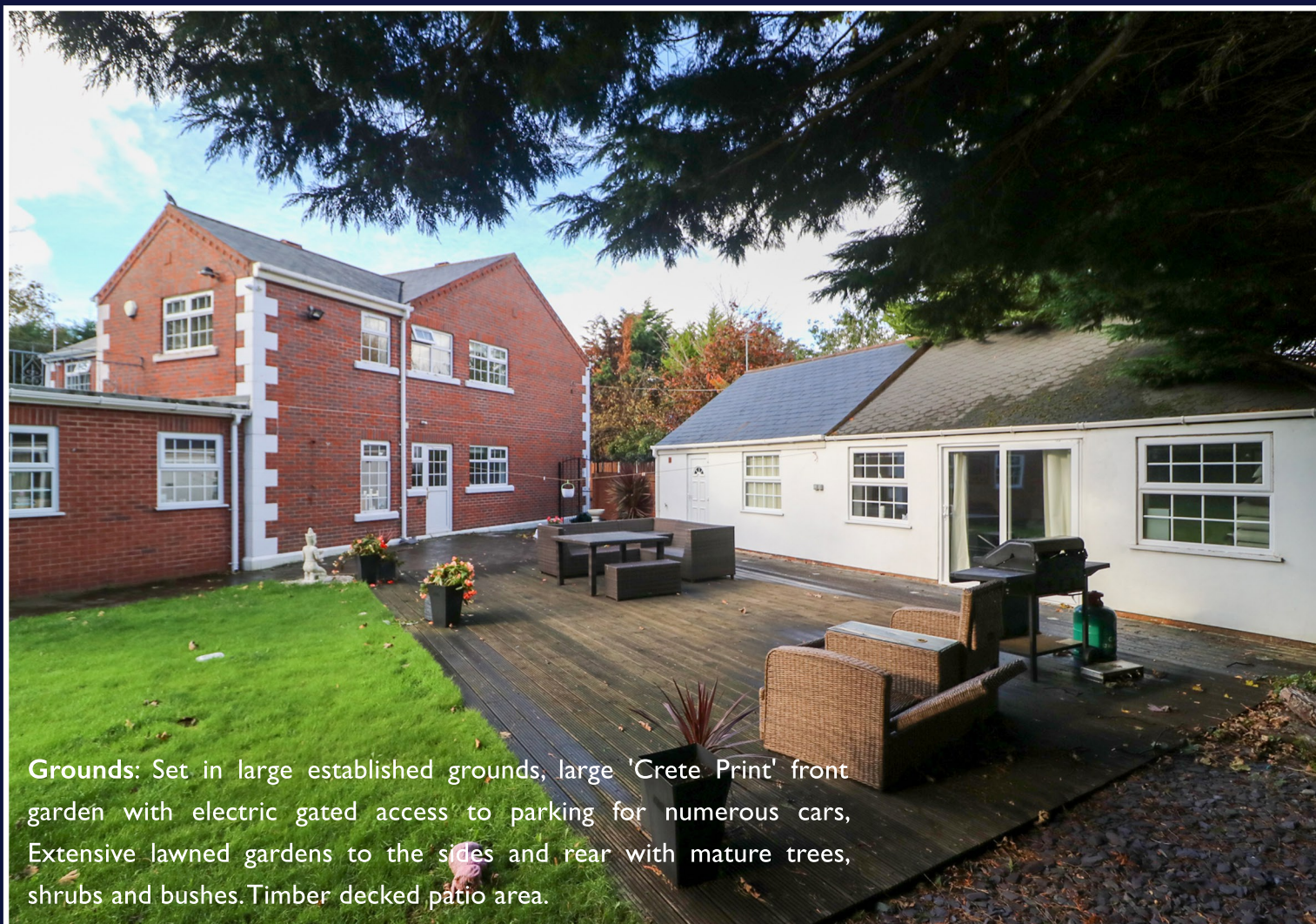
Upvc double glazed door through to the garden, upvc double glazed window, two radiators, doors through to shower room and lounge. built in wardrobe.

**Shower Room:** 8' 2" x 2' 1" (2.50m x 0.64m)

Shower enclosure, vanity wash hand basin and a low flush WC. full tiled.

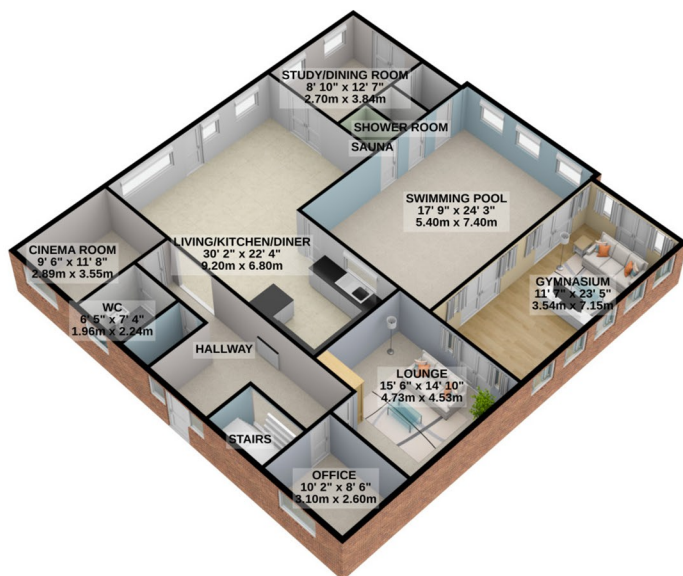




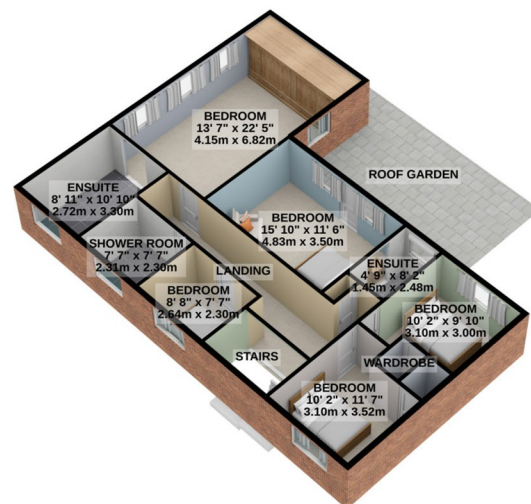




GROUND FLOOR  
2125 sq.ft. (197.4 sq.m.) approx.



1ST FLOOR  
1183 sq.ft. (109.9 sq.m.) approx.



TOTAL FLOOR AREA : 3308 sq.ft. (307.3 sq.m.) approx.

For illustrative purposes only. Decorative finishes, fixtures, fittings and furnishings do not represent the current state of the property. Measurements are approximate. Not to scale.  
Made with Metropix © 2021

Score	Energy rating	Current	Potential
92+	A		
81-91	B		81   B
69-80	C		
55-68	D	62   D	
39-54	E		
21-38	F		
1-20	G		



# MCKENZIE

THE REAL ESTATE AGENT

**78 TOPPING STREET**

**BLACKPOOL FY1 3AD**

**01253 499007**

**MCKENZIEESTATES.CO.UK**

**INFO@MCKENZIEESTATES.CO.UK**

Under the Property Misdescription Act 1991 we endeavour to make our sales details accurate and reliable but they should not be relied upon as statements or representations of fact and they do not constitute any part of an offer of contract. The seller does not make any representations to give any warranty in relation to the property and we have no authority to do so on behalf of the seller. Services, fittings and equipment referred to in the sales details have not been tested (unless otherwise stated) and no warranty can be given as to their condition. We strongly recommend that all the information which we provide about the property is verified by yourself or your advisers. Under the Estate Agency Act 1991 you will be required to give us financial information in order to verify your financial position before we can recommend any offer to the vendor. MCKENZIE - The Real Estate Agent is a trading name of McKenzie Estate Agents Ltd. Company Reg No: 10143396